



ALWAYS LOOK UP
BEFORE YOU CAST

DON'T CAST YOUR LIFE AWAY!

Every year throughout the country, fishing lines are found hanging from overhead power lines. Minimise the risk of inadvertent contact with the electricity network by looking up and looking out for overhead power lines before you start fishing.

Always carry rods and poles at a low level and parallel to the ground.

Visit nienetworks.co.uk for further safety advice. If you see a fishing line entangled on overhead power lines, contact NIE Networks on 03457 643643 immediately.



ADD OUR CUSTOMER HELPLINE TO YOUR MOBILE PHONE.

IT COULD SAVE YOUR LIFE!

03457 643 643

SAFETY SAVES LIVES

CAST WITH CARE!



IN CASE OF EMERGENCY CONTACT
NIE NETWORKS ON 03457 643 643

www.nienetworks.co.uk

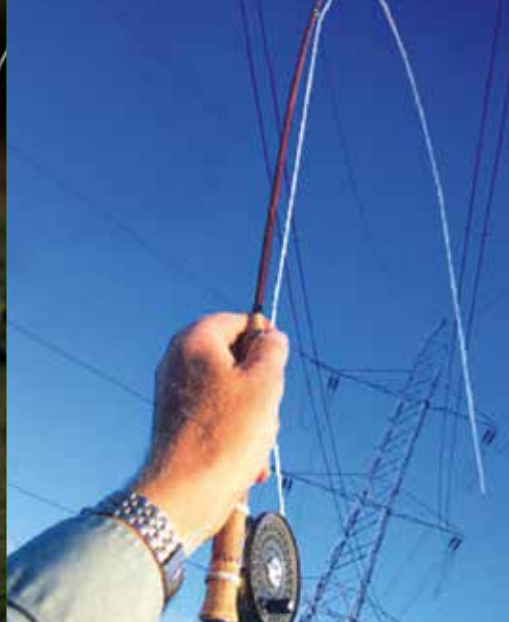
 @NIElectricity

 Northern Ireland
**Electricity
Networks**

www.nienetworks.co.uk

 @NIElectricity

 Northern Ireland
**Electricity
Networks**



CAST WITH CARE!

The electricity network is all around us, providing us with a vital form of energy.

Angling is generally safe but serious or fatal injuries have come from contact with overhead power lines.

THE NETWORK AROUND US

Overhead power lines are supported on wood poles or steel pylons.

They are normally bare (not insulated) and can be dangerously mistaken for telephone wires.

Overhead power lines can carry voltages between 230 and 275,000 volts.

Electricity can jump gaps. This means you don't have to touch the overhead power line to suffer electric shock and burns, which could be fatal.

Most fishing rods and poles will conduct electricity, especially those containing carbon fibres.

SAFETY SAVES LIVES

Always Look Up and Look Out for overhead power lines before rods are assembled and before fishing begins.

It is not easy to estimate the height and distance of overhead power lines from the ground and an adequate safety distance must be kept to avoid accidental contact.

Fish at least 30 metres (100 feet) away from all overhead power lines. Measure along the ground to ensure you stay a safe distance.

If you own, lease or make waters available for fishing where overhead power lines are present, you must ensure anglers are made aware of the dangers. NIE Networks will provide safety signs, free of charge, which can be erected at key points.

Remind children never to fish near overhead power lines as they may not be able to calculate the safe distance required.

ANGLING SAFETY SIGNS

There are two types of safety signs. The first is a yellow warning notice used to provide a general warning at the approaches to the water. The second is a prohibition notice. This signifies no fishing is allowed within 30 metres of overhead power lines.

Further advice and warning signs are available from NIE Networks by calling our Customer Helpline on 03457 643 643. The warning signs will be provided free of charge in limited numbers and the responsibility for the erection and maintenance rests with the users.

On no account should the signs be attached to electricity poles. Separate posts must be provided.



FISH AT LEAST 30 METRES AWAY FROM OVERHEAD POWER LINES



FOR ADVICE CONTACT NIE NETWORKS ON 03457 643 643